

For Lease

186 Anson Street ORANGE

ANSON STREET RETAIL STRIP

Orange is the largest urban area in Central West New South Wales, population circa 40,000.

The diversified regional economy of Orange is centred on mining, health services and government administration.

Location

Located on the eastern side of Anson Street, south of Summer Street in the Anson Street retail precinct.

Description

Situated in the heart of the Orange CBD
Close to the entry to the Orange City Center Shopping Center
Well presented small retail shop plus shared kitchen and toilet facilities
Reverse cycle air-conditioning and one on-site car parking space

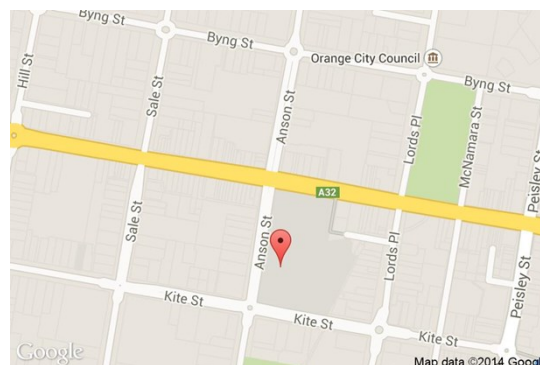
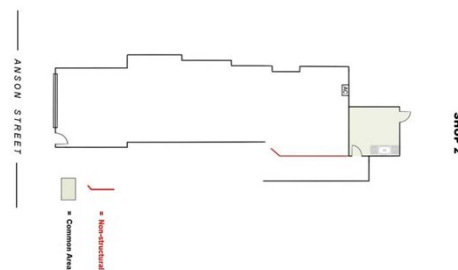
- Amenities: Shared
Ceiling: Plasterboard
Lighting: Mixed Configuration
Air Conditioning: Yes
- Parking: 1 on-site car space
- Zoning: B3 Commercial Core

Tenancy	Area m ²	Rent (Ex GST)			Net/Gross
		\$pa	\$/m ²	\$/week	
Shop 2	50	\$26,000	\$520	\$500	Gross

For more information please contact

David Hall
0429 656 101

Nigel Staniforth
0401 279 795



BENCHMARK COMMERCIAL

194B Lords Place, Orange NSW 2800

Telephone: (02) 63 62 5988
Email: sales@bmpa.com.au
Web: www.bmpa.com.au

