

# For Lease

## Centrepont Arcade 226-232 Summer Street ORANGE

### CENTRAL CBD RETAIL OR OFFICE SUITE

Orange is the largest urban area in Central West New South Wales, population circa 42,500.

The diversified regional economy of Orange is centred on mining, health services and government administration.

### Location

Situated in the heart of the CBD on the sunny side of the main retail strip between the Commonwealth Bank and Post Office.

### Description

Quality small retail shop in landmark CBD building  
Shop 3 fronts rear laneway/ walkway  
Air-conditioned & excellent natural light  
Beautifully renovated and maintained building  
Common areas include lift, modern amenities, daily cleaning and security patrols.  
Garbage charge & air-conditioning maintenance payable in addition to rent.

Parking: Close to public car park

Zoning: B3 Commercial Core

| Tenancy                | Area<br>m <sup>2</sup> | Rent (Ex GST) |                   | Net/Gross |
|------------------------|------------------------|---------------|-------------------|-----------|
|                        |                        | \$pa          | \$/m <sup>2</sup> |           |
| Ground Floor<br>Shop 3 | 57                     | \$18,200      | \$319             | Gross     |



### For more information please contact

David Hall  
0429 656 101

Nigel Staniforth  
0401 279 795

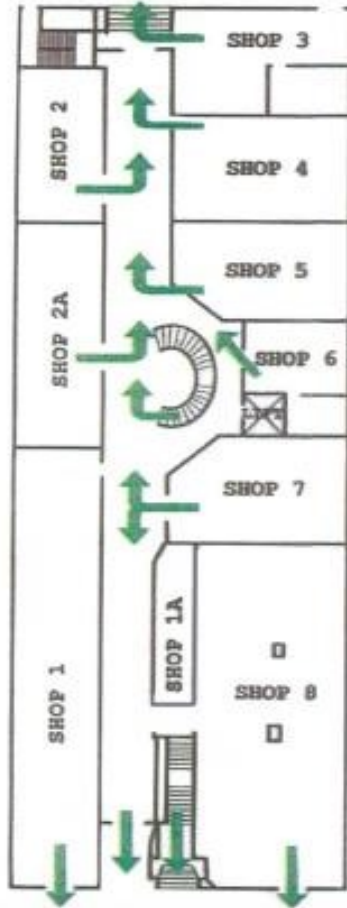


**BENCHMARK**  
COMMERCIAL

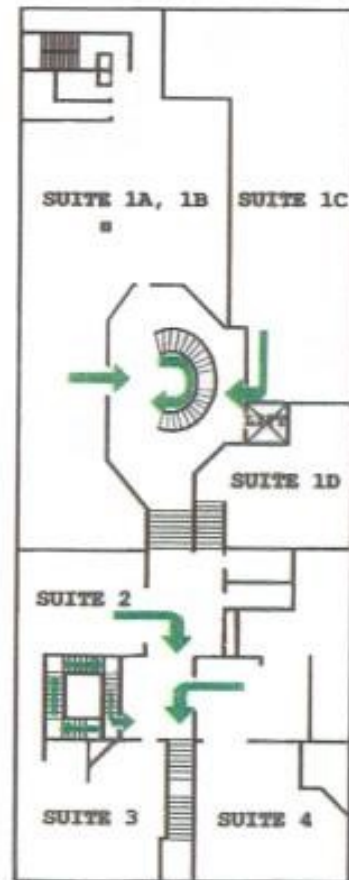
194B Lords Place, Orange NSW 2800

Telephone: (02) 63 62 5988  
Email: sales@bmpa.com.au  
Web: www.bmpa.com.au

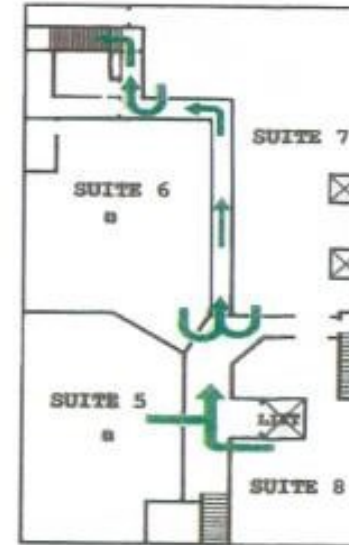
Ground Floor



Level 1



Level 2



Level 3

