

For Lease

Centrepont Arcade 226-232 Summer Street ORANGE

CENTRAL CBD RETAIL & OFFICE SUITES

Orange is the largest urban area in Central West New South Wales, population circa 40,000.

The diversified regional economy of Orange is centred on mining, health services and government administration.

Location

Situated in the heart of the CBD on the sunny side of the main retail strip between the Commonwealth Bank and Post Office.

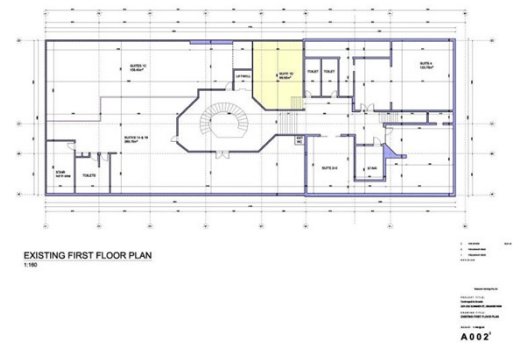
Description

Quality retail & office accommodation in landmark CBD building
 Air-conditioned shops/suites from 16 sqm to 290 sqm
 Beautifully renovated and maintained building
 Common areas include lift, modern amenities, daily cleaning and security patrols
 Competitive rental rates & flexible lease terms
 Garbage charge & air-conditioning maintenance payable in addition to rent

Amenities: Shared
 Ceiling: Mixed Construction
 Lighting: Mixed Configuration
 Air Conditioning: Yes
 Data Cabling: No
 Security System: No

Parking: Close to public car park

Zoning: B3 Commercial Core



Tenancy	Area m ²	Rent (Ex GST)		Net/Gross
		\$pa	\$/Week	
Level One Suite 1D	57	\$15,000	\$288/week + GST	Gross

For more information please contact

Nigel Staniforth
0401 279 795

David Hall
0429 656 101



194B Lords Place, Orange NSW 2800

Telephone: (02) 63 62 5988
 Email: sales@bmpa.com.au
 Web: www.bmpa.com.au

