

For Lease

Centrepont Arcade 226-232 Summer Street ORANGE

CENTRAL CBD OFFICE SUITE

Orange is the largest urban area in Central West New South Wales, population circa 40,000.

The diversified regional economy of Orange is centred on mining, health services and government administration.

Location

Situated in the heart of the CBD on the sunny side of the main retail strip between the Commonwealth Bank and Post Office.

Description

Quality office accommodation in landmark CBD building
Beautifully renovated and maintained building
Common areas include lift, modern amenities, daily cleaning and security patrols
Competitive rental rates & flexible lease terms
Garbage charge payable in addition to rent

Parking: Close to public car park

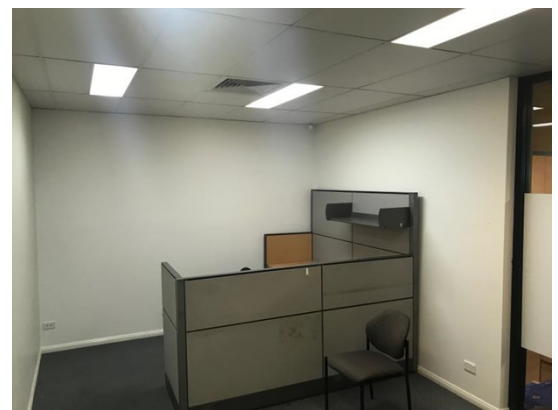
Zoning: B3 Commercial Core

Tenancy	Area m ²	Rent (Ex GST)		Net/Gross
		\$pa	\$/week	
Level Two Suite 9	50	\$15,600	\$300	Gross

For more information please contact

Nigel Staniforth
0401 279 795

David Hall
0429 656 101



BENCHMARK
COMMERCIAL

29 Sale Street, Orange NSW 2800

Telephone: (02) 63 62 5988
Email: sales@bmpa.com.au
Web: www.bmpa.com.au

