

For Lease

29-31 Sale Street ORANGE

LARGE WELL PRICED OFFICE - CBD

Orange is the largest urban area in Central West New South Wales, population circa 42,500.

The diversified regional economy of Orange is centred on mining, health services and government administration.

Location

Situated on the western side of Sale Street in Orange CBD in close proximity to Summer Centre and Woolworths car park entries.

Description

Located in busy CBD cross street
Close to Woolworths and Summer Centre car park
Large office space with fitout in place
Excellent natural light
On-site parking

Parking: 4 on-site parking spaces

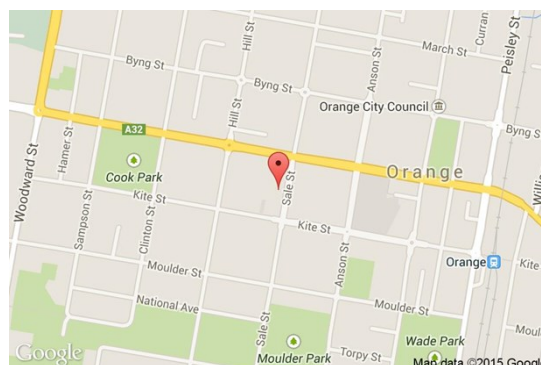
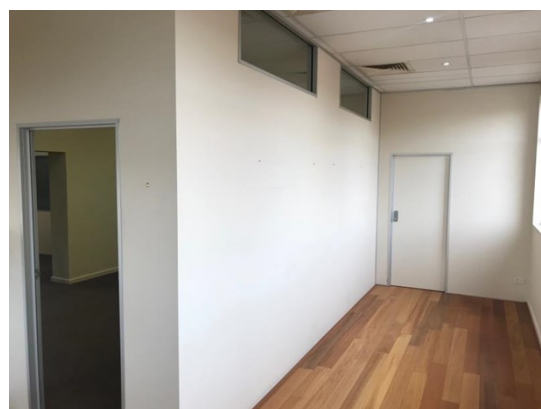
Zoning: B3 Commercial Core

Tenancy	Area m ²	Rent (Ex GST)		Net/Gross
		\$pa	\$/m ²	
First Floor	367	\$71,000	\$193	Gross

For more information please contact

Nigel Staniforth
0401 279 795

David Hall
0429 656 101



BENCHMARK
COMMERCIAL

194B Lords Place, Orange NSW 2800

Telephone: (02) 63 62 5988
Email: sales@bmpa.com.au
Web: www.bmpa.com.au

