

# For Lease

## 29-31 Sale Street ORANGE

### LARGE WELL PRICED OFFICE - CBD

Orange is the largest urban area in Central West New South Wales, population circa 42,500.

The diversified regional economy of Orange is centred on mining, health services and government administration.

### Location

Situated on the western side of Sale Street in Orange CBD in close proximity to Summer Centre and Woolworths car park entries.

### Description

Located in busy CBD cross street  
Close to Woolworths and Summer Centre car park  
Large office space with fitout in place  
Excellent natural light  
On-site parking

Parking: 4 on-site parking spaces

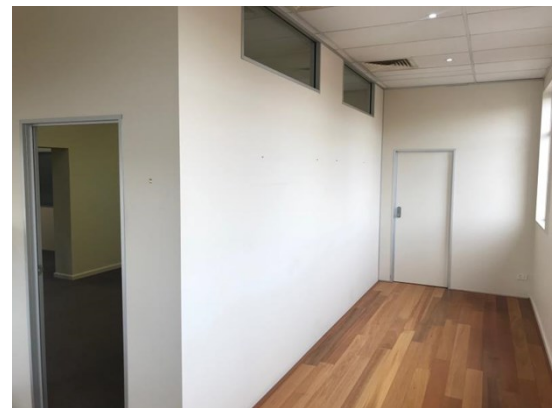
Zoning: B3 Commercial Core

Tenancy	Area m <sup>2</sup>	Rent (Ex GST)		Net/Gross
		\$pa	\$/m <sup>2</sup>	
First Floor	367	\$71,000	\$193	Gross

### For more information please contact

Nigel Staniforth  
0401 279 795

David Hall  
0429 656 101



**BENCHMARK**  
COMMERCIAL

194B Lords Place, Orange NSW 2800

Telephone: (02) 63 62 5988  
Email: sales@bmpa.com.au  
Web: www.bmpa.com.au

