

For Sale

Proposed Lot 30 Industry Drive ORANGE

INDUSTRIAL LAND - NORTH ORANGE

Orange is the largest urban area in Central West New South Wales, population circa 42,500.

The diversified regional economy of Orange is centred on mining, health services and government administration.

Location

Description

Situated in North Orange growth corridor 1,500 metres from Northern Distributor Road
B-Double access approved
DA approved for 34 allotments
Construction of Stage 1 complete
High quality buildings already developed within the estate
Street lights and underground electricity
Adjoining lots also available for sale

Land Area: 4,076 sqm

Zoning:

Price: Contact Agent



For more information please contact

Nigel Staniforth
0401 279 795

David Hall
0429 656 101

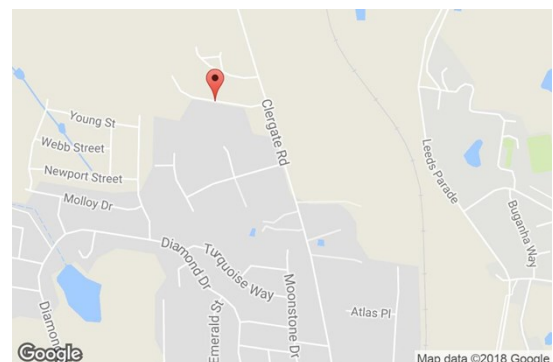


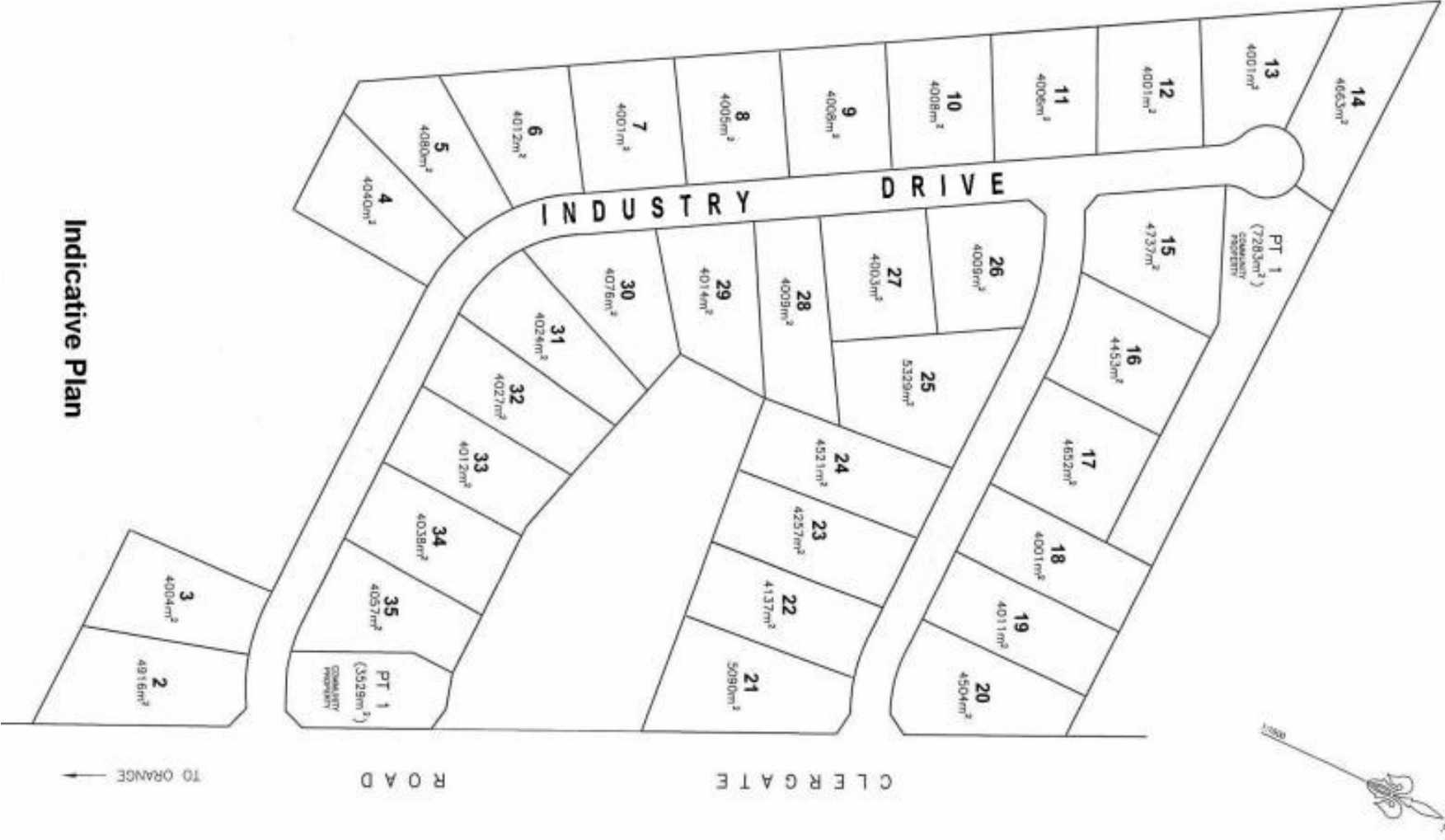
194B Lords Pl, Orange NSW 2800

Telephone: (02) 63 62 5988

Email: sales@bmpa.com.au

Web: www.bmpa.com.au





Indicative Plan

TO ORANGE →

