

For Lease

222 Anson Street ORANGE

CENTRAL CBD OFFICES

Orange is the largest urban area in Central West New South Wales, population circa 40,000.

The diversified regional economy of Orange is centred on mining, health services and government administration.

Location

Located on the Eastern side of Anson Street in the heart of the CBD and fronting the Orange Central Shopping Centre car park.

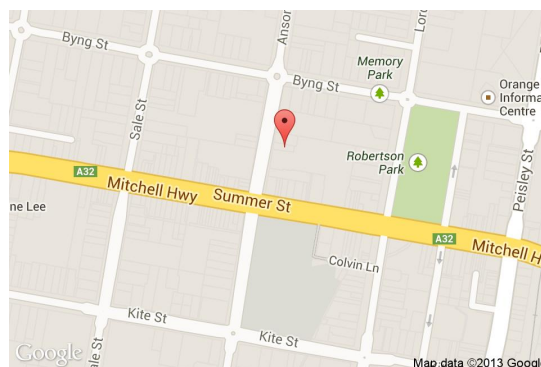
Description

Excellent CBD location
Existing fitout
Suites ready to occupy
First floor areas available together or individually
One ground floor tenancy available as well

Amenities: Shared
Ceiling: Mixed Construction
Lighting: Mixed Configuration
Air Conditioning: Yes
Data Cabling: Yes
Security System: Yes

Parking: Public car park adjoins

Zoning: B3 Commercial Core



Tenancy	Area m ²	Rent (Ex GST)		Net/Gross
		\$pa	\$/m ²	
Level One Suite 3	129	\$23,865	\$185	Gross

For more information please contact

Nigel Staniforth
0401 279 795

David Hall
0429 656 101



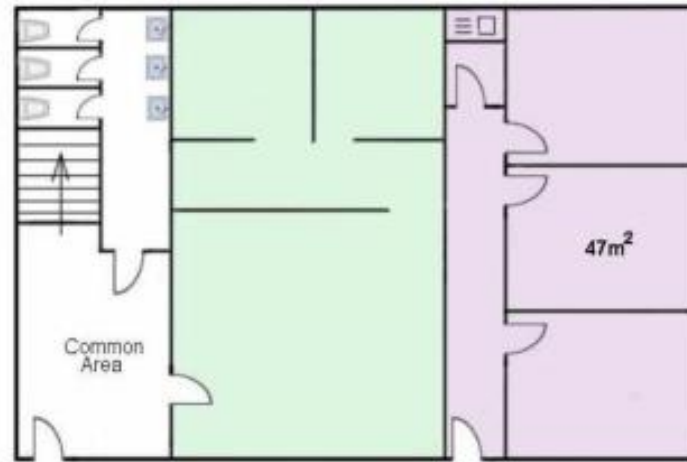
BENCHMARK
COMMERCIAL

194B Lords Place, Orange NSW 2800

Telephone: (02) 63 62 5988
Email: sales@bmpa.com.au
Web: www.bmpa.com.au

ALL AREAS AND FIGURES APPROX. ONLY. All precaution has been taken to establish the accuracy of the information contained in this brochure. It does not, however, constitute any representation by the Vendor or Agent.

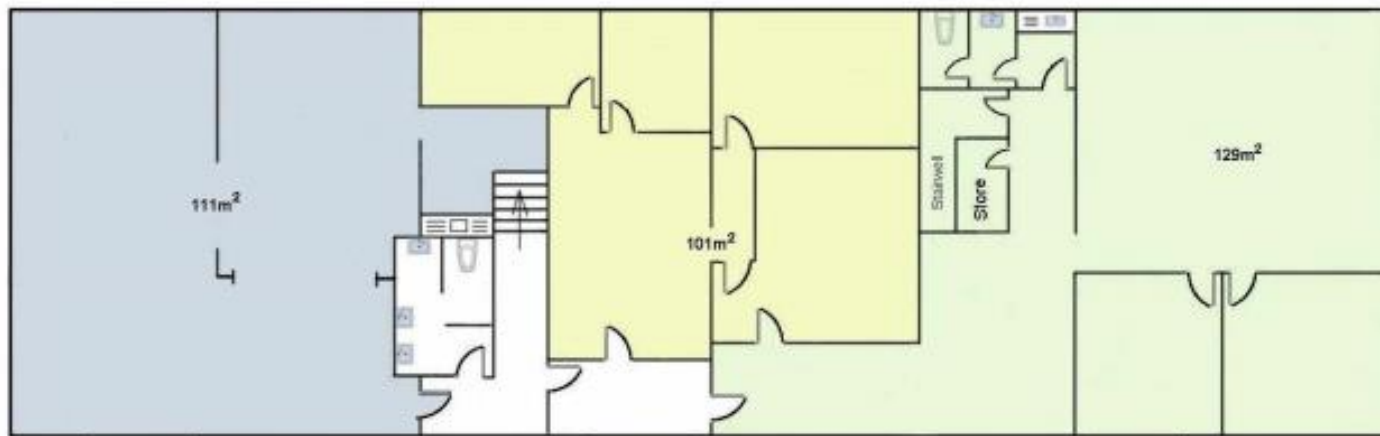
GROUND FLOOR



SUITE 4

SUITE 5

FIRST FLOOR



SUITE 1

SUITE 2

SUITE 3

ANSON STREET