

# For Lease

222 Anson Street ORANGE

## CENTRAL CBD OFFICES

Orange is the largest urban area in Central West New South Wales, population circa 40,000.

The diversified regional economy of Orange is centred on mining, health services and government administration.

## Location

Located on the Eastern side of Anson Street in the heart of the CBD and fronting the Orange Central Shopping Centre car park.

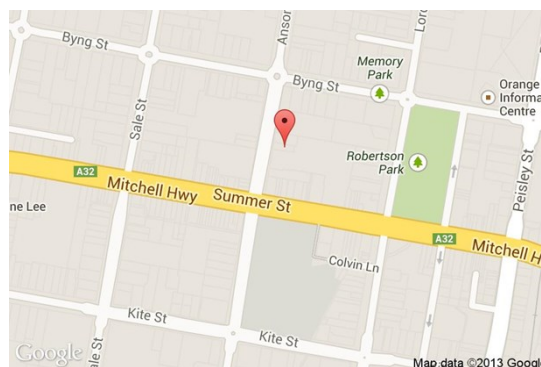
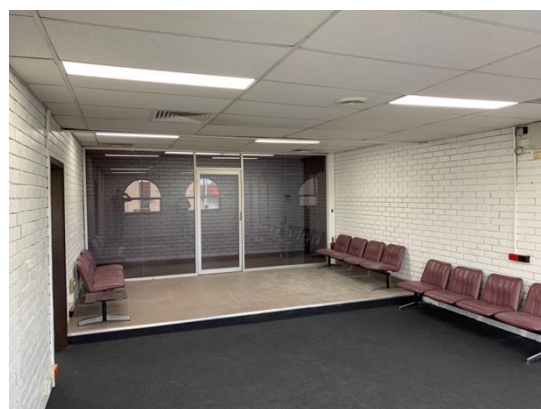
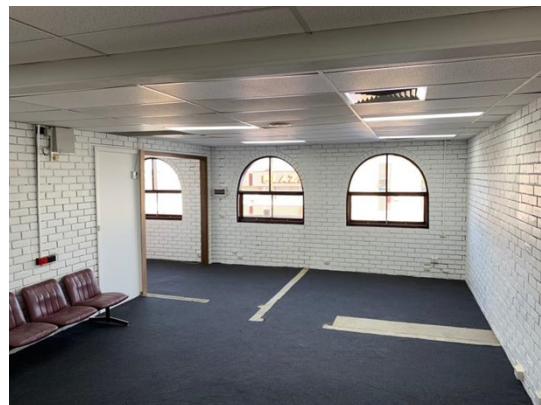
## Description

Excellent CBD location  
Existing fitout  
Suites ready to occupy  
First floor areas available together or individually  
One ground floor tenancy available as well

Amenities: Shared  
Ceiling: Mixed Construction  
Lighting: Mixed Configuration  
Air Conditioning: Yes  
Data Cabling: Yes  
Security System: Yes

Parking: Public car park adjoins

Zoning: B3 Commercial Core



Tenancy	Area m <sup>2</sup>	Rent (Ex GST)		Net/Gross
		\$pa	\$/m <sup>2</sup>	
Level One Suite 2	101	\$18,685	\$185	Gross

## For more information please contact

Nigel Staniforth  
0401 279 795

David Hall  
0429 656 101

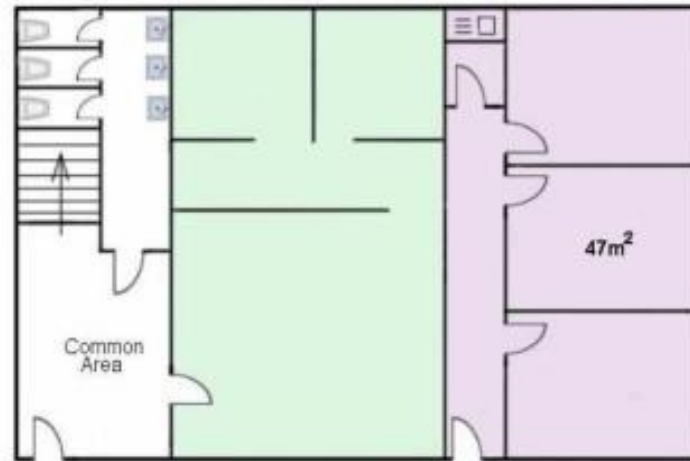


**BENCHMARK**  
COMMERCIAL

194B Lords Place, Orange NSW 2800

Telephone: (02) 63 62 5988  
Email: sales@bmpa.com.au  
Web: www.bmpa.com.au

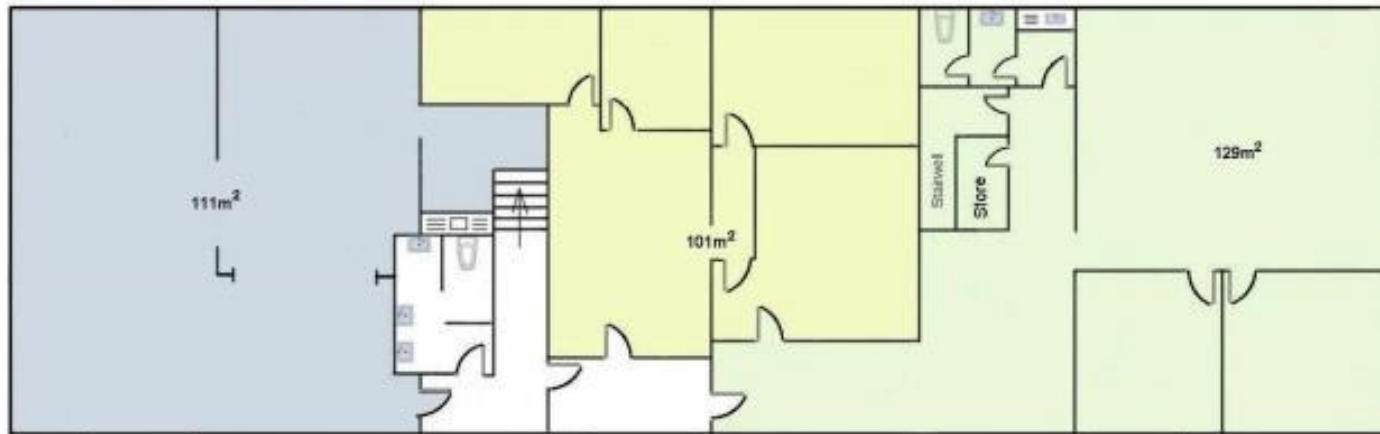
GROUND FLOOR



SUITE 4

SUITE 5

FIRST FLOOR



SUITE 1

SUITE 2

SUITE 3

ANSON STREET