

For Lease

28 Sale Street ORANGE

CBD RETAIL SHOP OR OFFICE

Orange is the largest urban area in Central West New South Wales, population circa 40,000.

The diversified regional economy of Orange is centred on mining, health services and government administration.

Location

Situated on the eastern side of Sale Street opposite the Summer Centre Shopping Centre in the Orange CBD

Description

Excellent location in the busy Sale Street strip opposite the Summer Centre Shopping Centre and close to the entrance to the Woolworths car park

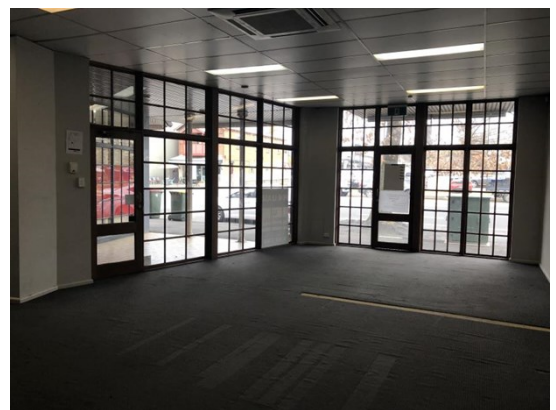
Retail or office tenancy

Recently refurbished common area kitchenette and amenities

Amenities: Shared
Ceiling: Grid
Lighting: Fluorescent
Air Conditioning: Yes

Parking: One on-site car space

Zoning: B3 Commercial Core



Tenancy	Area m ²	Rent (Ex GST)			Net/Gross
		\$pa	\$/m ²	\$/week	
28A	70	\$22,000	\$317	\$423	Gross

For more information please contact

David Hall
0429 656 101

Nigel Staniforth
0401 279 795



BENCHMARK
COMMERCIAL

194B Lords Place, Orange NSW 2800

Telephone: (02) 63 62 5988
Email: sales@bmpa.com.au
Web: www.bmpa.com.au

