

For Lease

Centrepont Arcade 226-232 Summer Street ORANGE

CENTRAL CBD RETAIL & OFFICE SUITES

Orange is the largest urban area in Central West New South Wales, population circa 42,500.

The diversified regional economy of Orange is centred on mining, health services and government administration.

Location

Situated in the heart of the CBD on the sunny side of the main retail strip between the Commonwealth Bank and Post Office.

Description

Quality retail or office accommodation in landmark CBD building
Beautifully renovated and maintained building
Good window frontage onto the Arcade
Open clear span space with rear kitchenette
Common areas include lift, modern amenities, daily cleaning and security patrols
Flexible lease terms
No outgoings payable other than garbage charge and air-conditioner maintenance

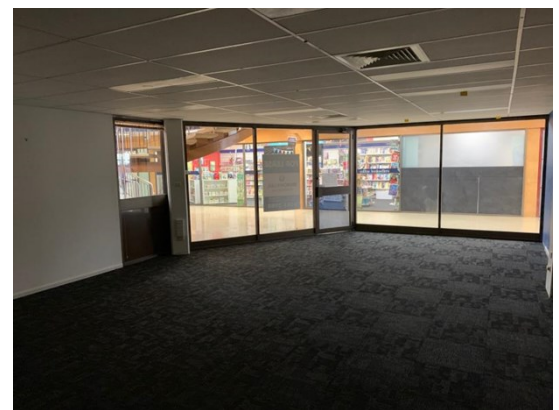
Parking: Close to public car park

Zoning: B3 Commercial Core

Tenancy	Area m ²	Rent (Ex GST)		Net/Gross
		\$pa	\$/m ²	
Ground Floor Shop 5	67	\$24,000	\$358	Gross

For more information please contact

David Hall
0429 656 101



BENCHMARK
COMMERCIAL

194B Lords Place, Orange NSW 2800
Telephone: (02) 63 62 5988
Email: sales@bmpa.com.au
Web: www.bmpa.com.au

SHOP 4 & 5

