

# For Lease

## Centrepont Arcade 226-232 Summer Street ORANGE

### CENTRAL CBD RETAIL & OFFICE SUITES

Orange is the largest urban area in Central West New South Wales, population circa 42,500.

The diversified regional economy of Orange is centred on mining, health services and government administration.

### Location

Situated in the heart of the CBD on the sunny side of the main retail strip between the Commonwealth Bank and Post Office.

### Description

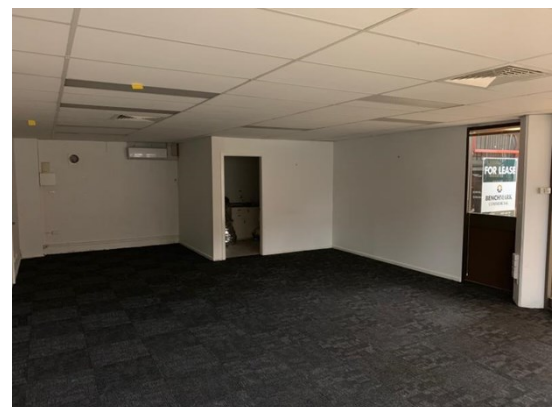
Quality retail & office accommodation in landmark CBD building  
Air-conditioned shops/suites from 16 sqm to 290 sqm  
Beautifully renovated and maintained building  
Common areas include lift, modern amenities, daily cleaning and security patrols  
Competitive rental rates & flexible lease terms  
Garbage charge & air-conditioning maintenance payable in addition to rent

Amenities: Shared  
Ceiling: Mixed Construction  
Lighting: Mixed Configuration  
Air Conditioning: Yes

Parking: Close to public car park

Zoning: B3 Commercial Core

Tenancy	Area m <sup>2</sup>	Rent (Ex GST)			Net/Gross
		\$pa	\$/m <sup>2</sup>	\$/week	
Ground Floor Shop 5	67	\$22,500	\$336	\$433	Gross



**BENCHMARK**  
COMMERCIAL

194B Lords Place, Orange NSW 2800  
Telephone: (02) 63 62 5988  
Email: sales@bmpa.com.au  
Web: www.bmpa.com.au

### For more information please contact

David Hall  
0429 656 101

**SHOP 4 & 5**

