

# For Lease

109-111 Byng Street ORANGE

## BOUTIQUE OFFICE/RETAIL PREMISES

Orange is the largest urban area in Central West New South Wales, population circa 40,000.

The diversified regional economy of Orange is centred on mining, health services and government administration.

## Location

Located on the northern side of Byng Street, between Anson Street & Lords Place.

## Description

Gracious heritage building  
Excellent location in Court House precinct of CBD  
New carpet and paint throughout  
Reverse cycle air-conditioner  
Suit office, retail or allied health (STCA)

Parking: No on-site parking

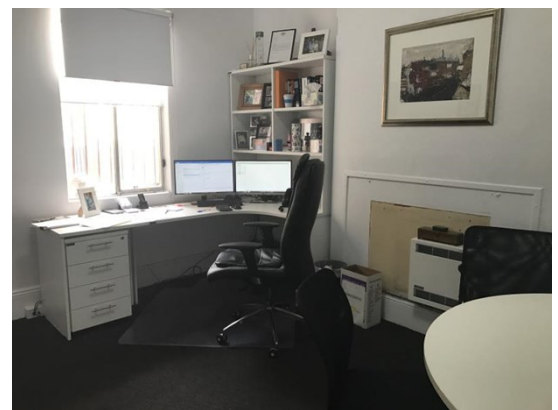
Zoning: B4 Mixed Use

Tenancy	Area m <sup>2</sup>	Rent (Ex GST)		Net/Gross
		\$pa	\$/week	
No. 111	70	\$22,000	\$423	Gross

## For more information please contact

David Hall  
0429 656 101

Nigel Staniforth  
0401 279 795



**BENCHMARK**  
COMMERCIAL

29 Sale Street, Orange NSW 2800

Telephone: (02) 63 62 5988  
Email: sales@bmpa.com.au  
Web: www.bmpa.com.au

