

For Lease

233-235 Lords Place ORANGE

MODERN CBD OFFICE SPACE

Orange is the largest urban area in Central West New South Wales, population circa 42,500.

The diversified regional economy of Orange is centred on mining, health services and government administration.

Location

Situated in the heart of the ORANGE CBD opposite Robertson Park

Description

Excellent location in heart of the CBD opposite Robertson Park

NAB House is a prominent/recognisable building with lift & disabled access

Modern, air-conditioned CBD office space

Internal amenities & kitchenette

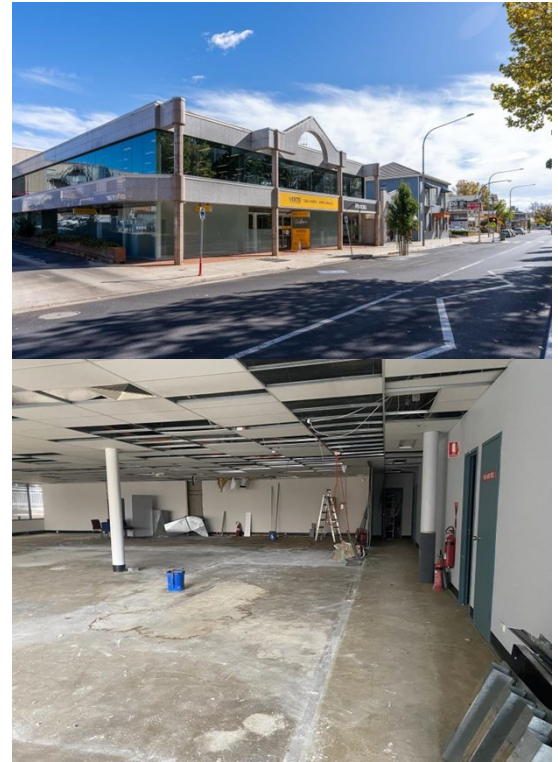
2 secure car spaces can be included in rental

Open floor tenancy

Incentives available for long term lease

Parking: 4 on-site spaces

Zoning: E2 Commercial Centre



BENCHMARK
COMMERCIAL

194B Lords Place, Orange NSW 2800

Telephone: (02) 63 62 5988
Email: sales@bmpa.com.au
Web: www.bmpa.com.au

Tenancy	Area m ²	Rent (Ex GST)		Net/Gross
		\$pa	\$/m ²	
Level 1 Suite 4	456	\$120,840	\$265	Net

For more information please contact

David Hall
0429 656 101

Nigel Staniforth
0401 279 795

