

# For Lease

## NAB House 233-235 Lords Place ORANGE

### CBD OFFICE SPACE

Orange is the largest urban area in Central West New South Wales, population circa 42,000.

The diversified regional economy of Orange is centred on mining, health services and government administration.

### Location

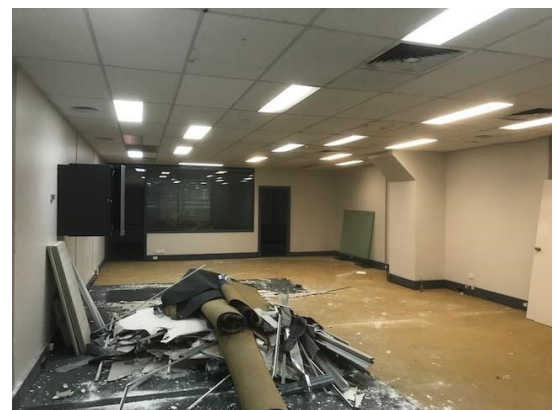
Situated in the heart of the ORANGE CBD opposite Robertson Park

### Description

Small office in sought after central CBD building  
Lift access to first floor  
Separate male & female amenities  
Predominantly open plan office + 2 partitioned offices/meeting rooms  
Reverse cycle air-conditioning  
New carpet and painting by lessor  
Incentives may be available by way of assistance with fit-out or rent free period for long term lease  
One secure car space available by negotiation

Parking: 1 on-site secure car space

Zoning: B3 Commercial Core



Tenancy	Area m <sup>2</sup>	Rent (Ex GST)		Net/Gross
		\$pa	\$/m <sup>2</sup>	
Level 1 Suite 7	116	\$32,010	\$275	Net

### For more information please contact

David Hall  
0429 656 101

Nigel Staniforth  
0401 279 795



**BENCHMARK**  
COMMERCIAL

29 Sale Street, Orange NSW 2800

Telephone: (02) 63 62 5988  
Email: sales@bmpa.com.au  
Web: www.bmpa.com.au

