

For Lease

146-148 Lords Place ORANGE

GROUND FLOOR CBD OFFICES WITH PARKING

Orange is the largest urban area in Central West New South Wales, population circa 40,000.

The diversified regional economy of Orange is centred on mining, health services and government administration.

Location

Situated approximately 350 metres South of the Post Office in the Orange CBD

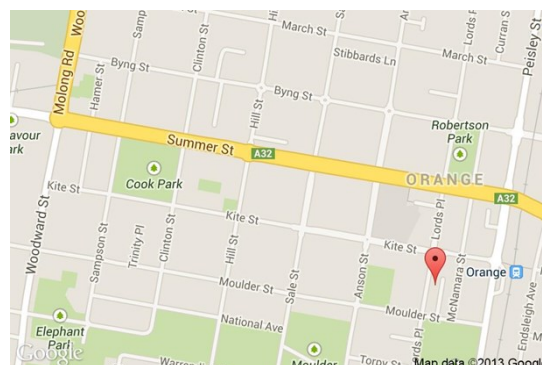
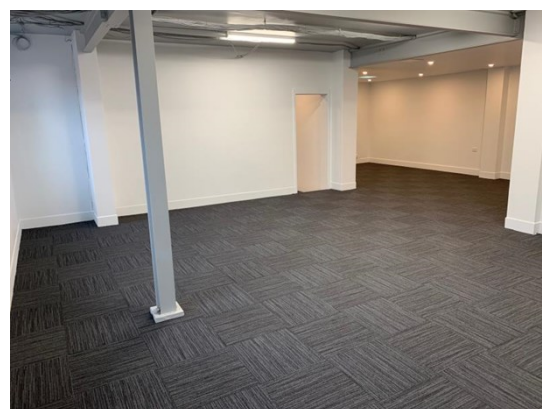
Description

Convenient CBD location with rear lane access
Reverse cycle air-conditioning
Existing office fitout
Public car park close by

Amenities: Separate Male & Female
Ceiling: Grid
Lighting: Fluorescent
Air Conditioning: Yes
Data Cabling: Yes
Security System: No

Parking: 4 onsite car parking spaces

Zoning: B3 Commercial Core



Tenancy	Area m ²	Rent (Ex GST)		Net/Gross
		\$pa	\$/m ²	
Ground Floor	240	\$60,833	\$253	Gross

For more information please contact

Nigel Staniforth
0401 279 795

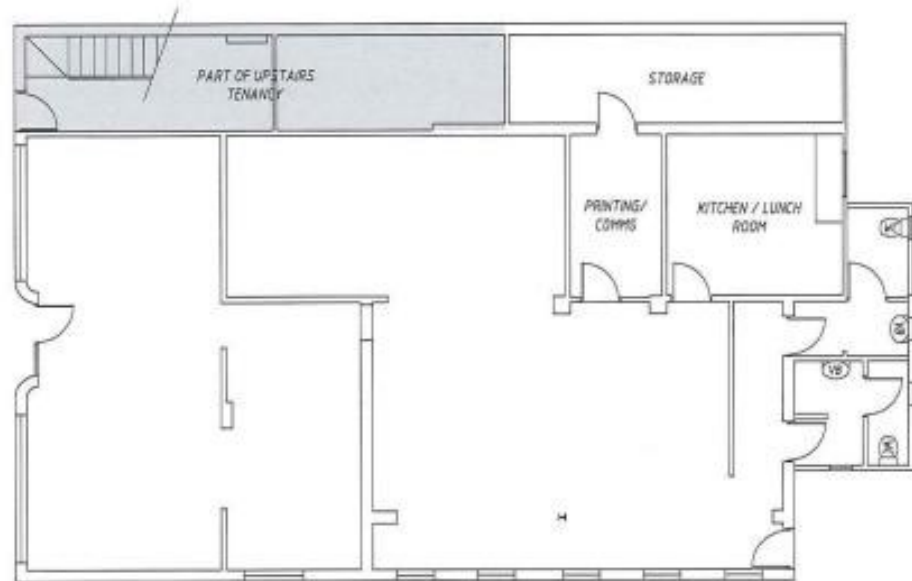
David Hall
0429 656 101



BENCHMARK
COMMERCIAL

194B Lords Place, Orange NSW 2800

Telephone: (02) 63 62 5988
Email: sales@bmpa.com.au
Web: www.bmpa.com.au



GROUND FLOOR PLAN