

# For Lease

146-148 Lords Place ORANGE

## GROUND FLOOR CBD OFFICES WITH PARKING

Orange is the largest urban area in Central West New South Wales, population circa 40,000.

The diversified regional economy of Orange is centred on mining, health services and government administration.

### Location

Situated approximately 350 metres South of the Post Office in the Orange CBD

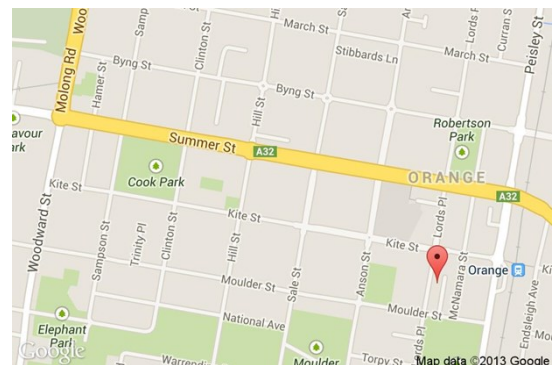
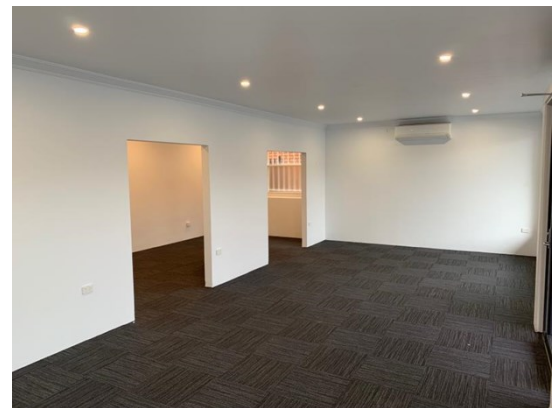
### Description

Convenient CBD location with rear lane access  
Reverse cycle air-conditioning  
Existing office fitout  
Public car park close by

Amenities: Separate Male & Female  
Ceiling: Grid  
Lighting: Fluorescent  
Air Conditioning: Yes  
Data Cabling: Yes  
Security System: No

Parking: 4 onsite car parking spaces

Zoning: B3 Commercial Core



Tenancy	Area m <sup>2</sup>	Rent (Ex GST)		Net/Gross
		\$pa	\$/m <sup>2</sup>	
Ground Floor	240	\$60,833	\$253	Gross

### For more information please contact

Nigel Staniforth  
0401 279 795

David Hall  
0429 656 101

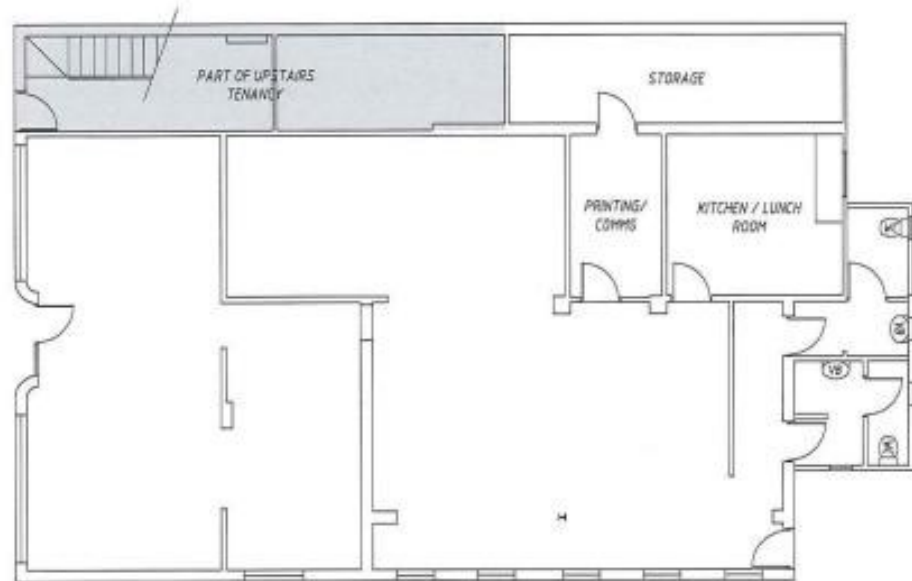


**BENCHMARK**  
COMMERCIAL

194B Lords Place, Orange NSW 2800

Telephone: (02) 63 62 5988  
Email: sales@bmpa.com.au  
Web: www.bmpa.com.au

ALL AREAS AND FIGURES APPROX. ONLY. All precaution has been taken to establish the accuracy of the information contained in this brochure. It does not, however, constitute any representation by the Vendor or Agent.



**GROUND FLOOR PLAN**