

For Lease

101 Byng Street ORANGE

SMALL CBD OFFICE WITH CAR PARK

Orange is the largest urban area in Central West New South Wales, population circa 40,000.

The diversified regional economy of Orange is centred on mining, health services and government administration.

Location

Located on the northern side of Byng Street, between Sale & Anson Street.

Description

Single office available with shared reception, boardroom & amenities

Attractive freestanding building in legal precinct of CBD

Rent includes electricity

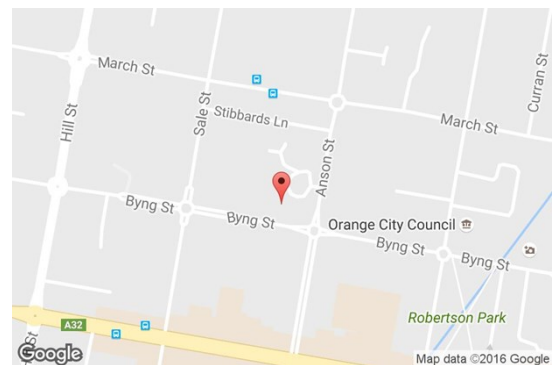
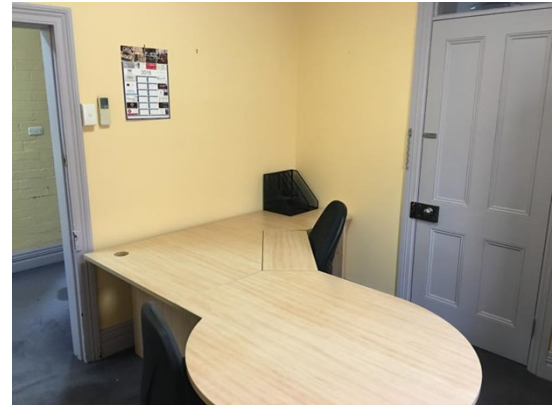
One on-site car parking space

Additional office area also available if required by negotiation.

Amenities: Separate Male & Female
Ceiling: Mixed Construction
Lighting: Mixed Configuration
Air Conditioning: Yes
Data Cabling: Yes
Security System: Yes

Parking: 1 onsite

Zoning: B3 Commercial Core



Tenancy	Area m ²	Rent (Ex GST)		Net/Gross
		\$pa	\$/Week	
Suite 1	11	\$13,000	\$250/week + GST	Gross

For more information please contact

Nigel Staniforth
0401 279 795

David Hall
0429 656 101



BENCHMARK COMMERCIAL

194B Lords Place, Orange NSW 2800

Telephone: (02) 63 62 5988
Email: sales@bmpa.com.au
Web: www.bmpa.com.au

ALL AREAS AND FIGURES APPROX. ONLY. All precaution has been taken to establish the accuracy of the information contained in this brochure. It does not, however, constitute any representation by the Vendor or Agent.

SUITE 1
101 BYNG STREET

