

# For Lease

113 Byng Street ORANGE

## MODERN CBD OFFICES

Orange is the largest urban area in Central West New South Wales, population circa 42,000.

The diversified regional economy of Orange is centred on mining, health services and government administration.

## Location

Excellent location in Court House precinct of the Orange CBD

## Description

Modern air-conditioned office accommodation in a multi-tenant CBD building  
Existing tenancy fitout including data cabling, partitioning and work stations  
Appealing terrace area in front of tenancy and coffee shop in foyer  
Tenancy area (approx 231m<sup>2</sup>) includes lunch room

Parking: N/A

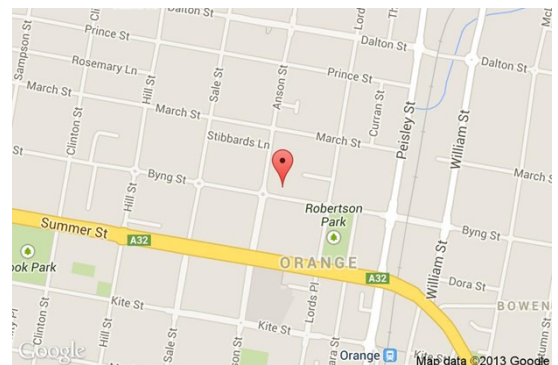
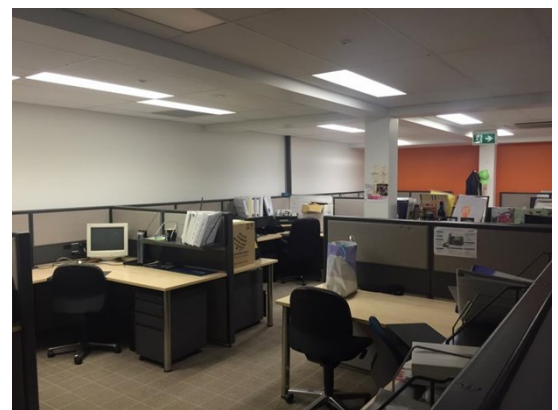
Zoning: B3 Commercial Core

Tenancy	Area m <sup>2</sup>	Rent (Ex GST)		Net/Gross
		\$pa	\$/m <sup>2</sup>	
Level One Suite Four	230	\$72,684	\$316	Gross

## For more information please contact

David Hall  
0429 656 101

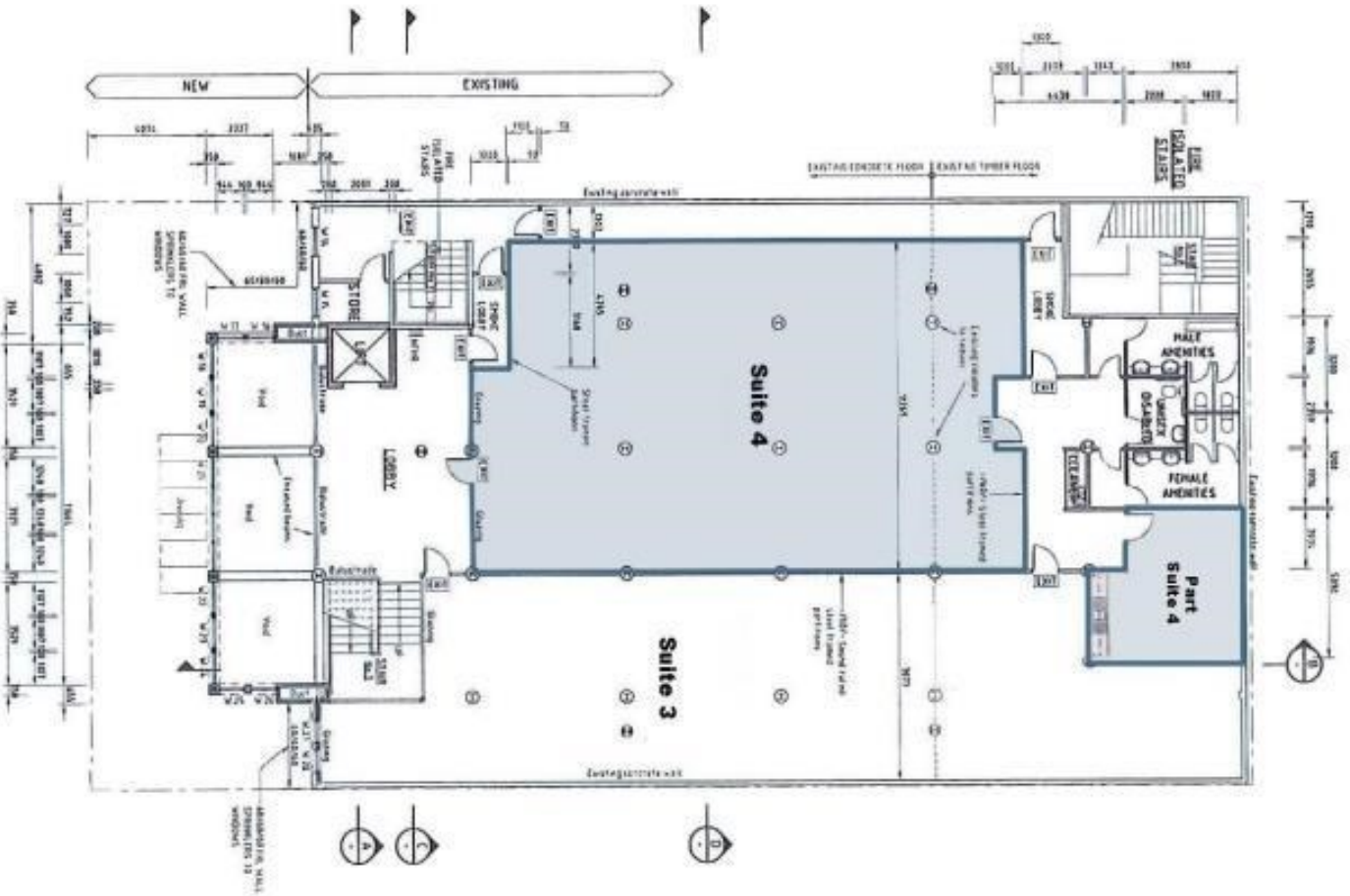
Nigel Staniforth  
0401 279 795



**BENCHMARK**  
COMMERCIAL

29 Sale Street, Orange NSW 2800

Telephone: (02) 63 62 5988  
Email: sales@bmpa.com.au  
Web: www.bmpa.com.au



**FIRST FLOOR PLAN**  
SCALE 1/8"  
DATE: 08/20/2018 09:11:10 AM