

For Lease

113 Byng Street ORANGE

MODERN CBD OFFICES

Orange is the largest urban area in Central West New South Wales, population circa 42,000.

The diversified regional economy of Orange is centred on mining, health services and government administration.

Location

Excellent location in Court House precinct of the Orange CBD

Description

Modern air-conditioned office accommodation in a multi-tenant CBD building
Existing tenancy fitout including data cabling, partitioning and work stations
Appealing terrace area in front of tenancy and coffee shop in foyer
Tenancy area (approx 231m²) includes lunch room

Parking: N/A

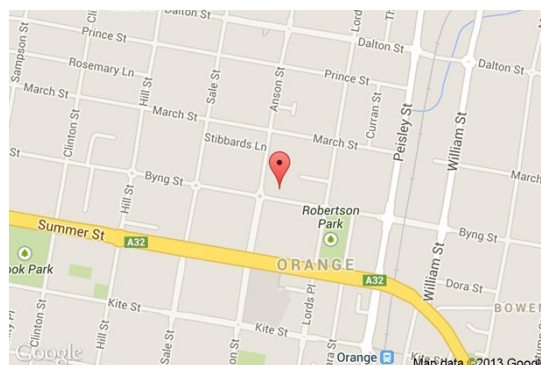
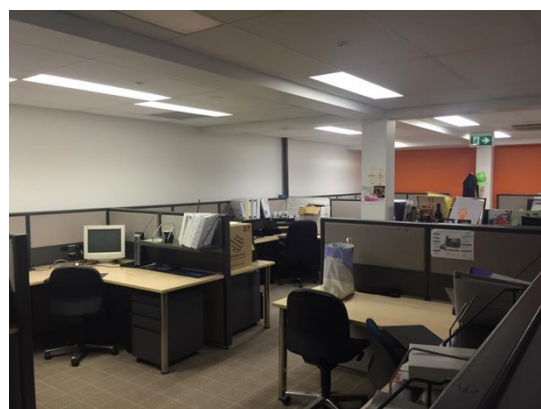
Zoning: B3 Commercial Core

Tenancy	Area m ²	Rent (Ex GST)		Net/Gross
		\$pa	\$/m ²	
Level One Suite Four	231	\$73,000	\$316	Gross

For more information please contact

David Hall
0429 656 101

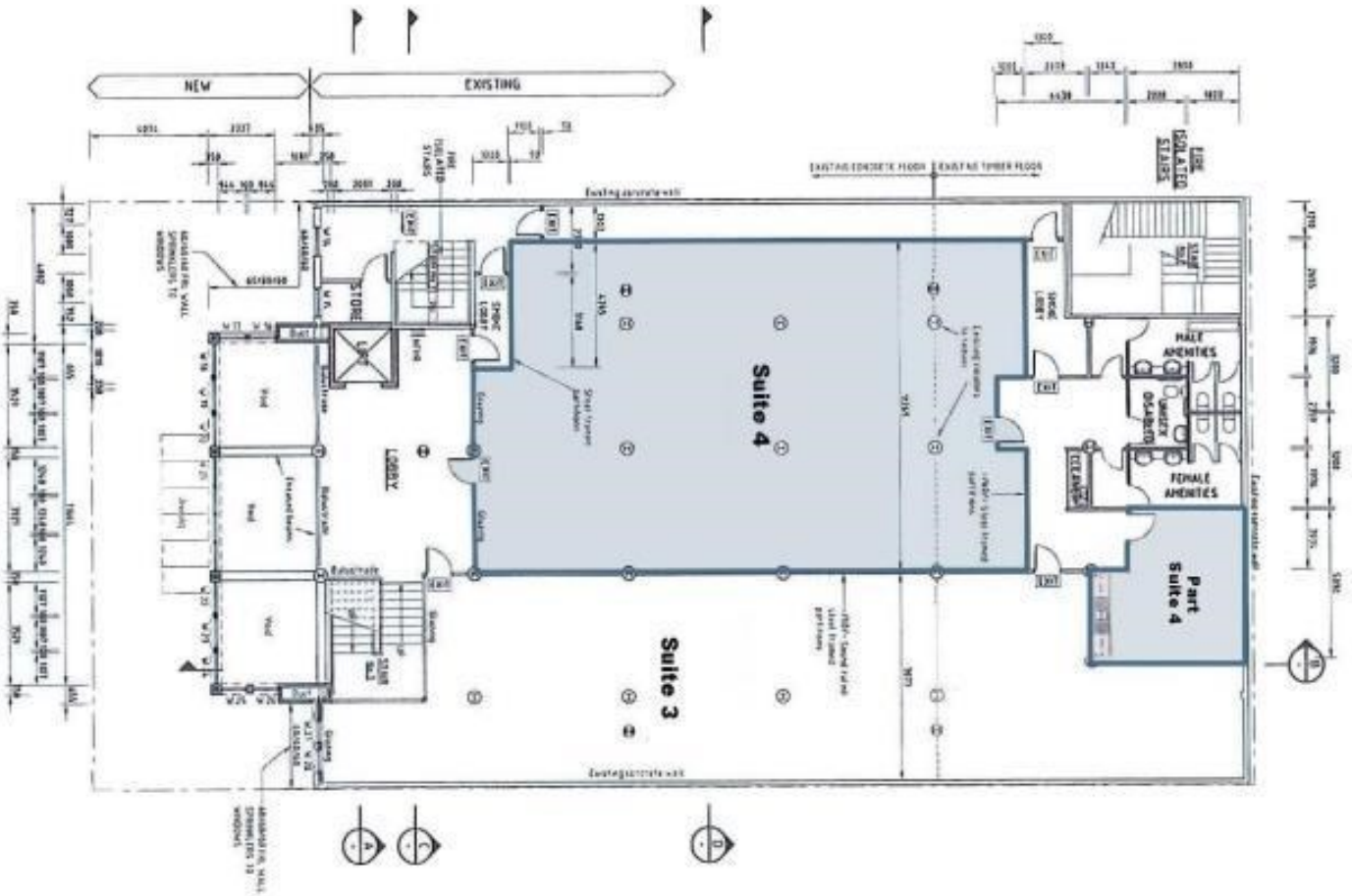
Nigel Staniforth
0401 279 795



BENCHMARK
COMMERCIAL

29 Sale Street, Orange NSW 2800

Telephone: (02) 63 62 5988
Email: sales@bmpa.com.au
Web: www.bmpa.com.au



FIRST FLOOR PLAN
SCALE 1/8" = 1'-0"
DATE: 08/20/2018 09:11:10 AM