

For Lease

Centrepont Arcade 226-232 Summer Street ORANGE

AFFORDABLE CBD OFFICE SUITE

Orange is the largest urban area in Central West New South Wales, population circa 40,000.

The diversified regional economy of Orange is centred on mining, health services and government administration.

Location

Situated in the heart of the CBD on the sunny side of the main retail strip between the Commonwealth Bank and Post Office.

Description

Very cheap open small office suite in the heart of the CBD
Reverse cycle air- conditioning
Shared amenities
Lift access
Adjoining tenancies also available

Parking: Close to public car park

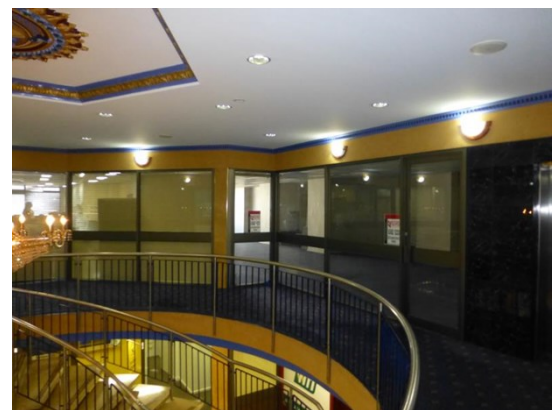
Zoning: B3 Commercial Core

Tenancy	Area m ²	Rent (Ex GST)		Net/Gross
		\$pa	\$/m ²	
Level One Suite 1C	156	\$24,000	\$153	Gross

For more information please contact

David Hall
0429 656 101

Nigel Staniforth
0401 279 795

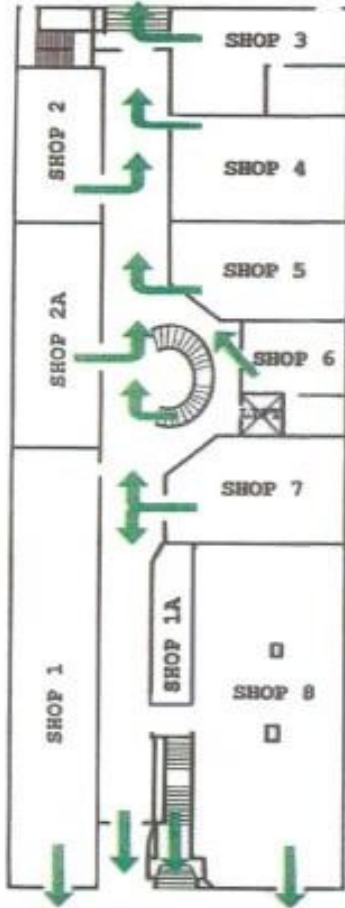


BENCHMARK
COMMERCIAL

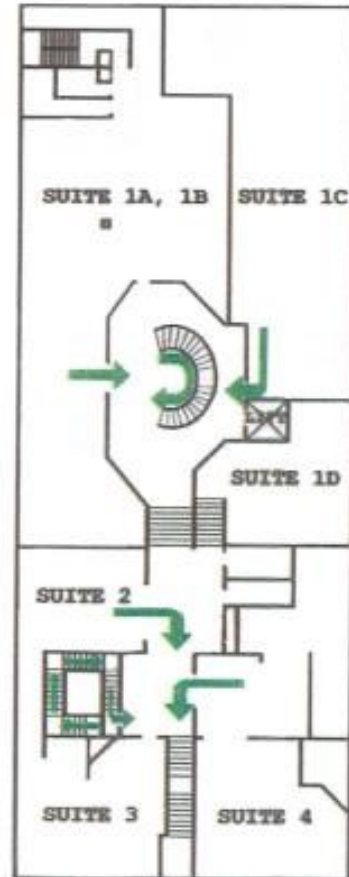
194B Lords Place, Orange NSW 2800

Telephone: (02) 63 62 5988
Email: sales@bmpa.com.au
Web: www.bmpa.com.au

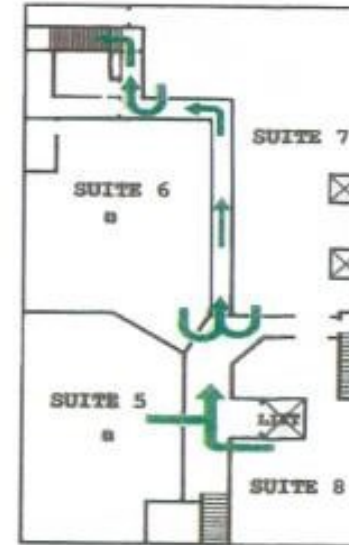
Ground Floor



Level 1



Level 2



Level 3

