

# For Lease

## Centrepont Arcade 226-232 Summer Street ORANGE

### AFFORDABLE CBD OFFICE SUITE

Orange is the largest urban area in Central West New South Wales, population circa 40,000.

The diversified regional economy of Orange is centred on mining, health services and government administration.

### Location

Situated in the heart of the CBD on the sunny side of the main retail strip between the Commonwealth Bank and Post Office.

### Description

Very cheap open small office suite in the heart of the CBD  
Reverse cycle air- conditioning  
Shared amenities  
Lift access  
Adjoining tenancies also available

Parking: Close to public car park

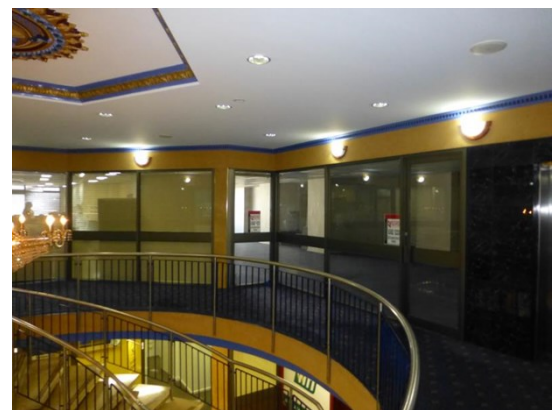
Zoning: B3 Commercial Core

Tenancy	Area m <sup>2</sup>	Rent (Ex GST)		Net/Gross
		\$pa	\$/m <sup>2</sup>	
Level One Suite 1C	156	\$24,000	\$153	Gross

### For more information please contact

David Hall  
0429 656 101

Nigel Staniforth  
0401 279 795



**BENCHMARK**  
COMMERCIAL

194B Lords Place, Orange NSW 2800

Telephone: (02) 63 62 5988  
Email: sales@bmpa.com.au  
Web: www.bmpa.com.au

