

For Lease

122-124 Kite Street ORANGE

QUALITY CBD OFFICE SPACE

Orange is the largest urban area in Central West New South Wales, population circa 40,000.

The diversified regional economy of Orange is centred on mining, health services and government administration.

Location

Situated on the corner of Lords Place and Kite street in the heart of Orange CBD with public car park opposite

Description

Modern ground &/or first floor open plan office space available

Excellent natural light

Carpeted and air-conditioned

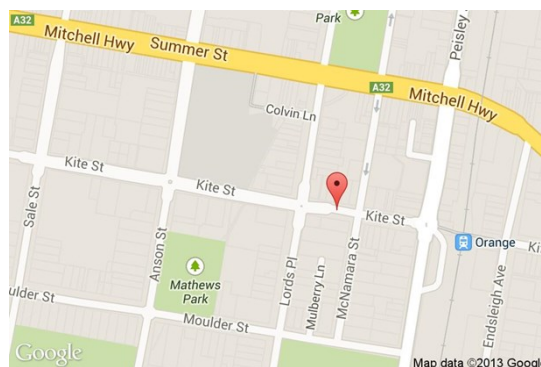
Building common areas fully refurbished

Public car park opposite property

Amenities: Shared
Ceiling: Grid
Lighting: Fluorescent
Air Conditioning: Yes
Data Cabling: Yes
Security System: Yes

Parking: On-site secure spaces

Zoning: B3 Commercial Core



Tenancy	Area m ²	Rent (Ex GST)		Net/Gross
		\$pa	\$/m ²	
Level 1 Suite 5	294	\$68,973	\$235	Net

For more information please contact

Nigel Staniforth
0401 279 795

David Hall
0429 656 101

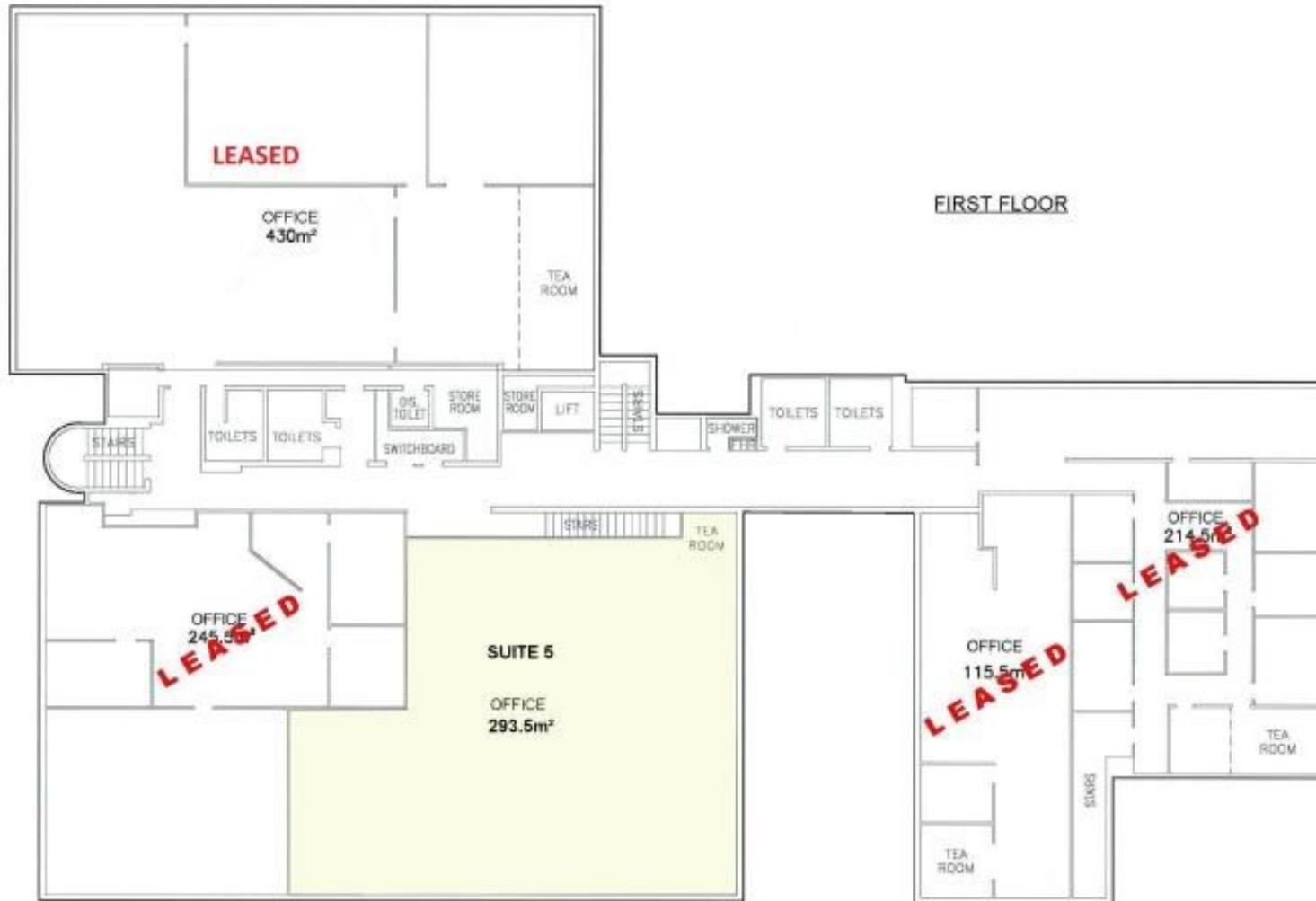


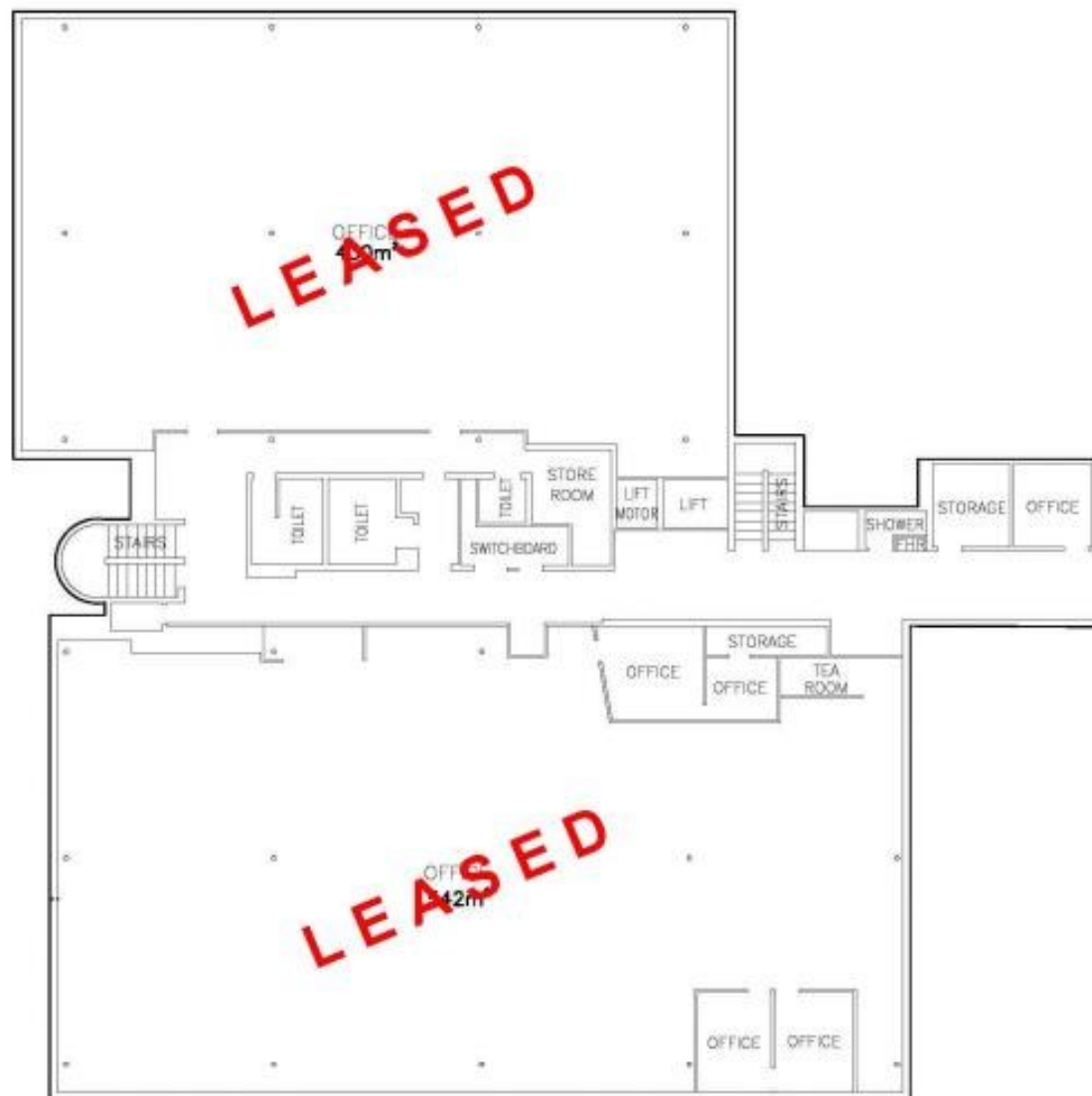
BENCHMARK COMMERCIAL

194B Lords Place, Orange NSW 2800

Telephone: (02) 6362 5988
Email: sales@bmpa.com.au
Web: www.bmpa.com.au

ALL AREAS AND FIGURES APPROX. ONLY. All precaution has been taken to establish the accuracy of the information contained in this brochure. It does not, however, constitute any representation by the Vendor or Agent.





GROUND FLOOR