

For Sale

68-72 Peisley Street ORANGE

HIGH EXPOSURE PEISLEY STREET

Orange is the largest urban area in Central West New South Wales, population circa 42,000.

The diversified regional economy of Orange is centred on mining, health services and government administration.

Location

Located on the southern side of busy Peisley Street, 1km south of the CBD.

Description

High exposure position on one of Orange's busiest arterial roads

1 of 3 lots sold with new commercial development completed
2 lots remaining (can also be sold in one line)

Lot 102 = 900m², Lot 103 = 817m²

Land Area: 1,717 sqm

Zoning: B4 Mixed Use

Price: \$595/m² + GST

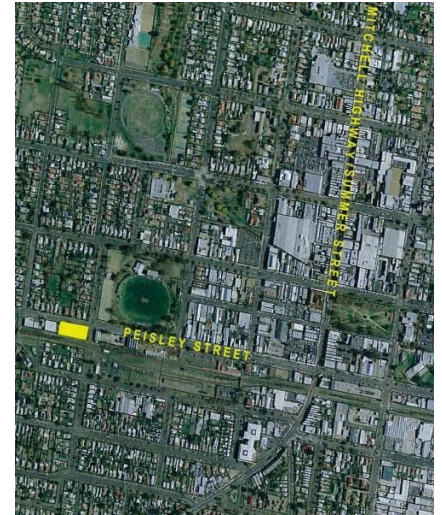
For more information please contact

David Hall

0429 656 101

Nigel Staniforth

0401 279 795



BENCHMARK
COMMERCIAL

194B Lords Place, Orange NSW 2800

Telephone: (02) 63 62 5988
Email: sales@bmpa.com.au
Web: www.bmpa.com.au

